



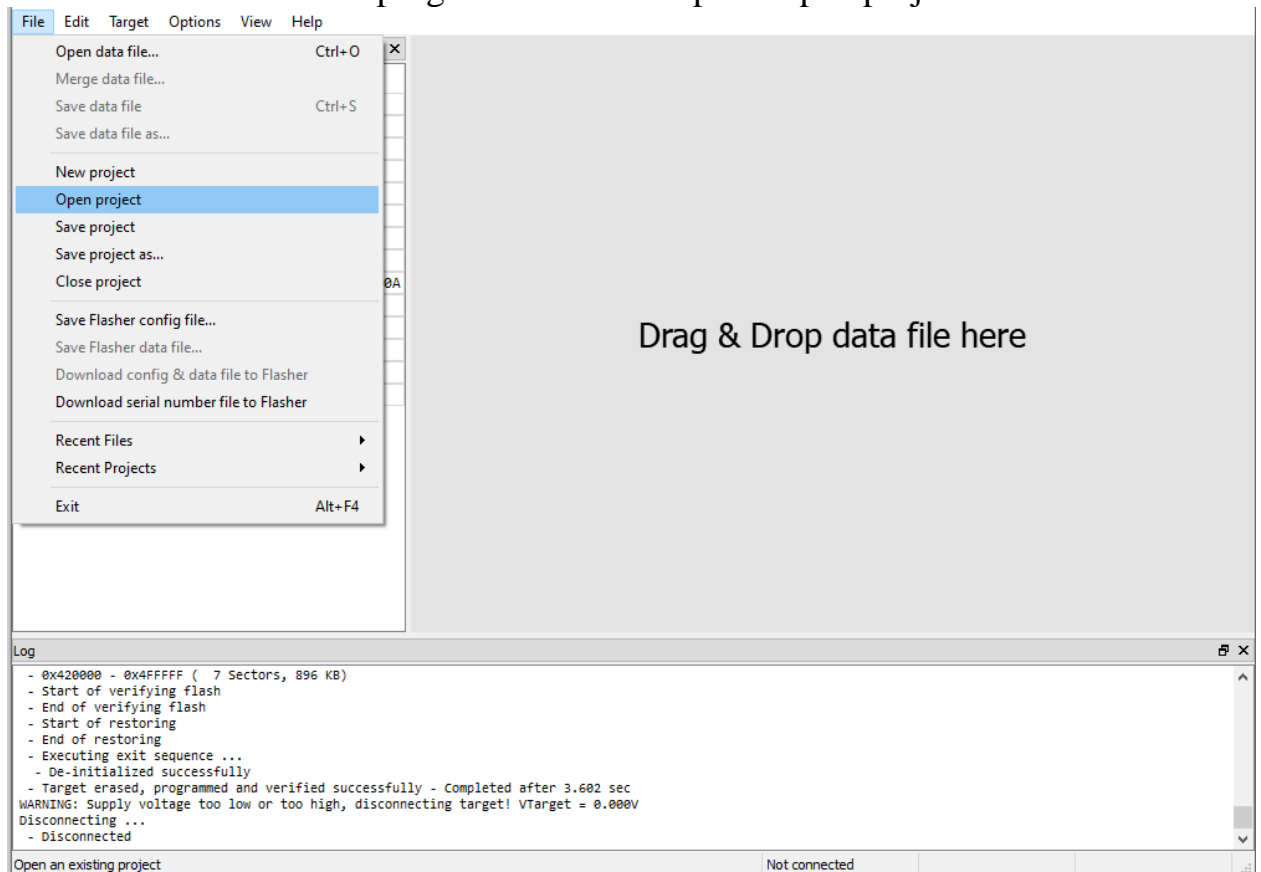
We remove the rubber, unscrew 4 screws



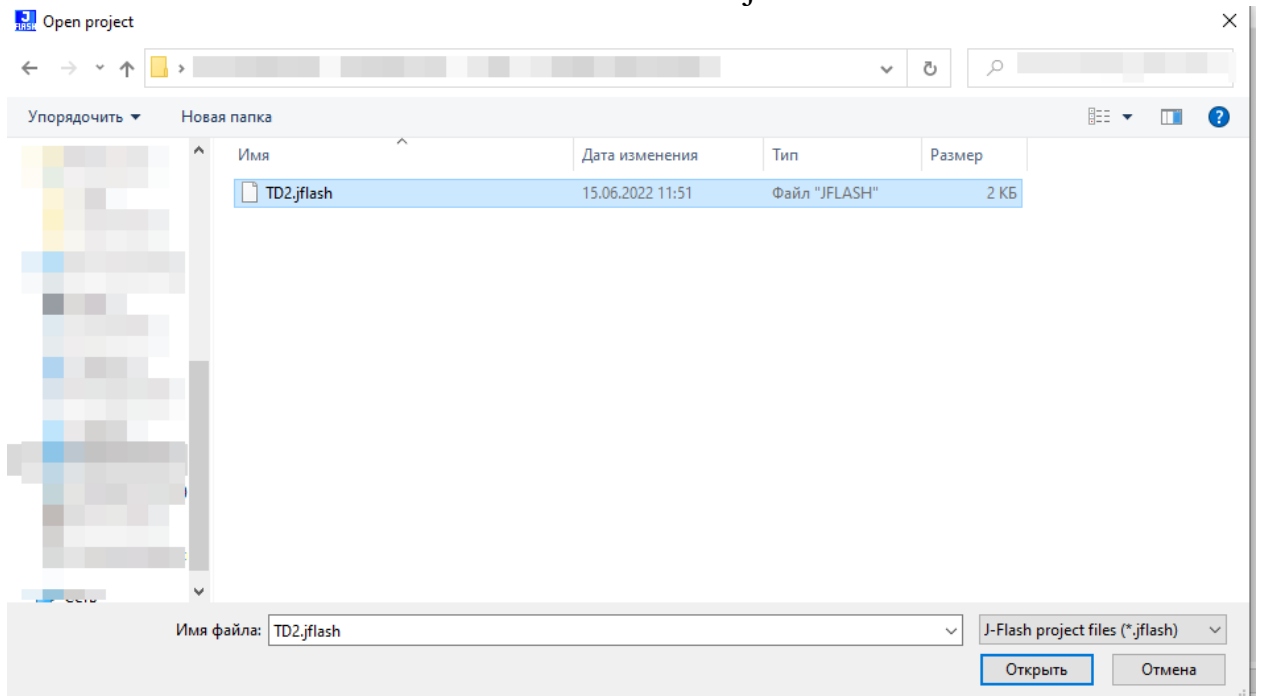
and again unscrew 4 screws



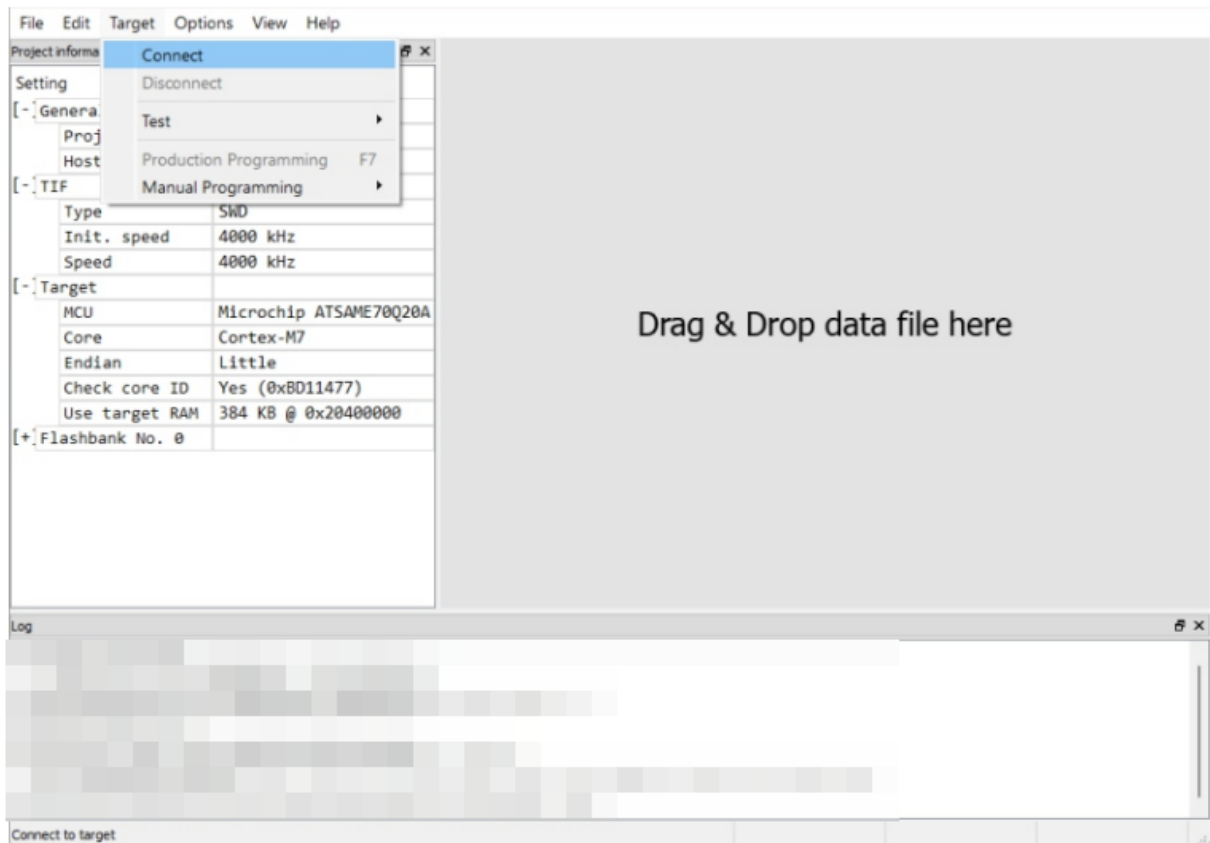
Connect to j-link V9, no lower version
Start program J-Flash and push Open project



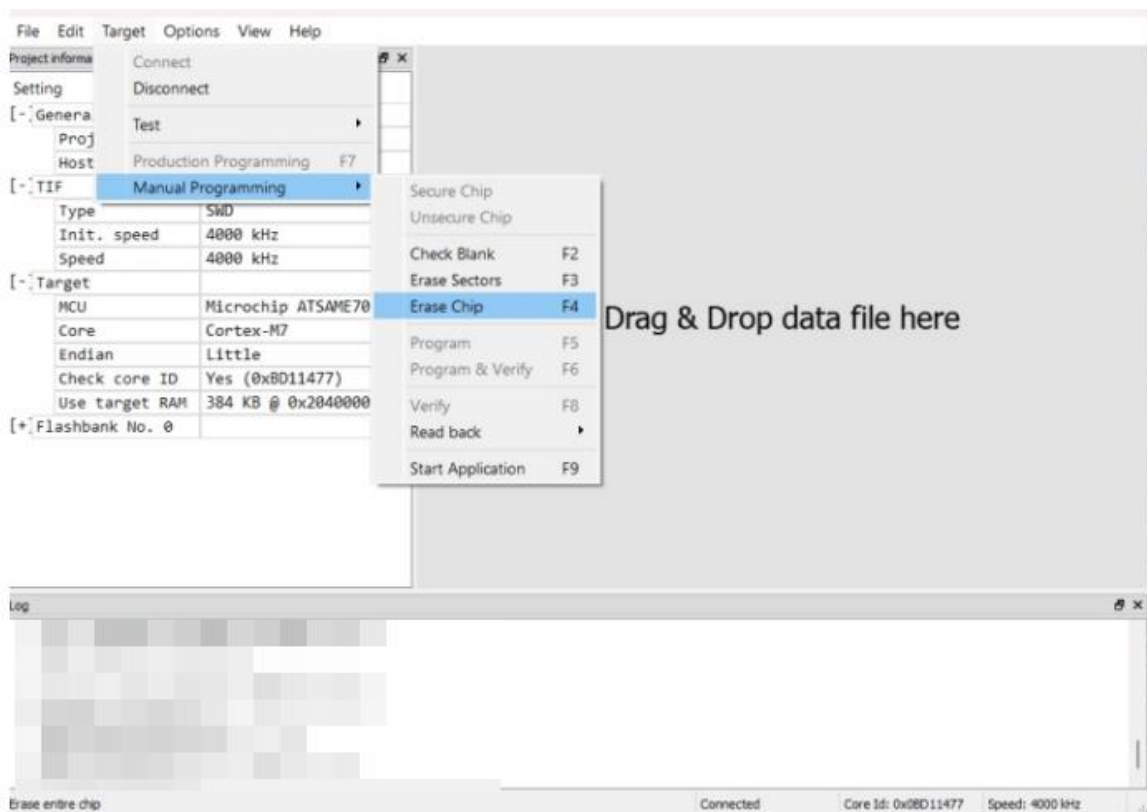
in folder select TD2.jflash



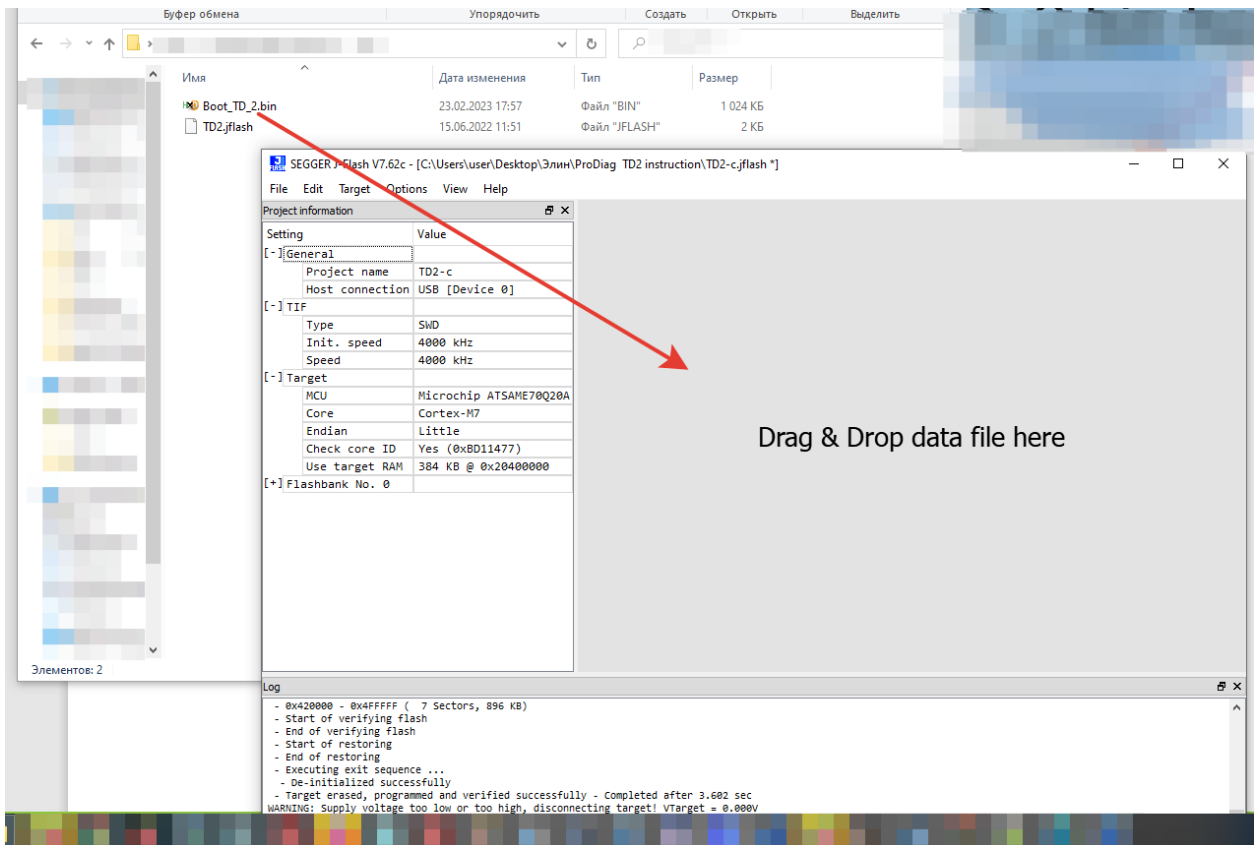
in program select Target/Connect



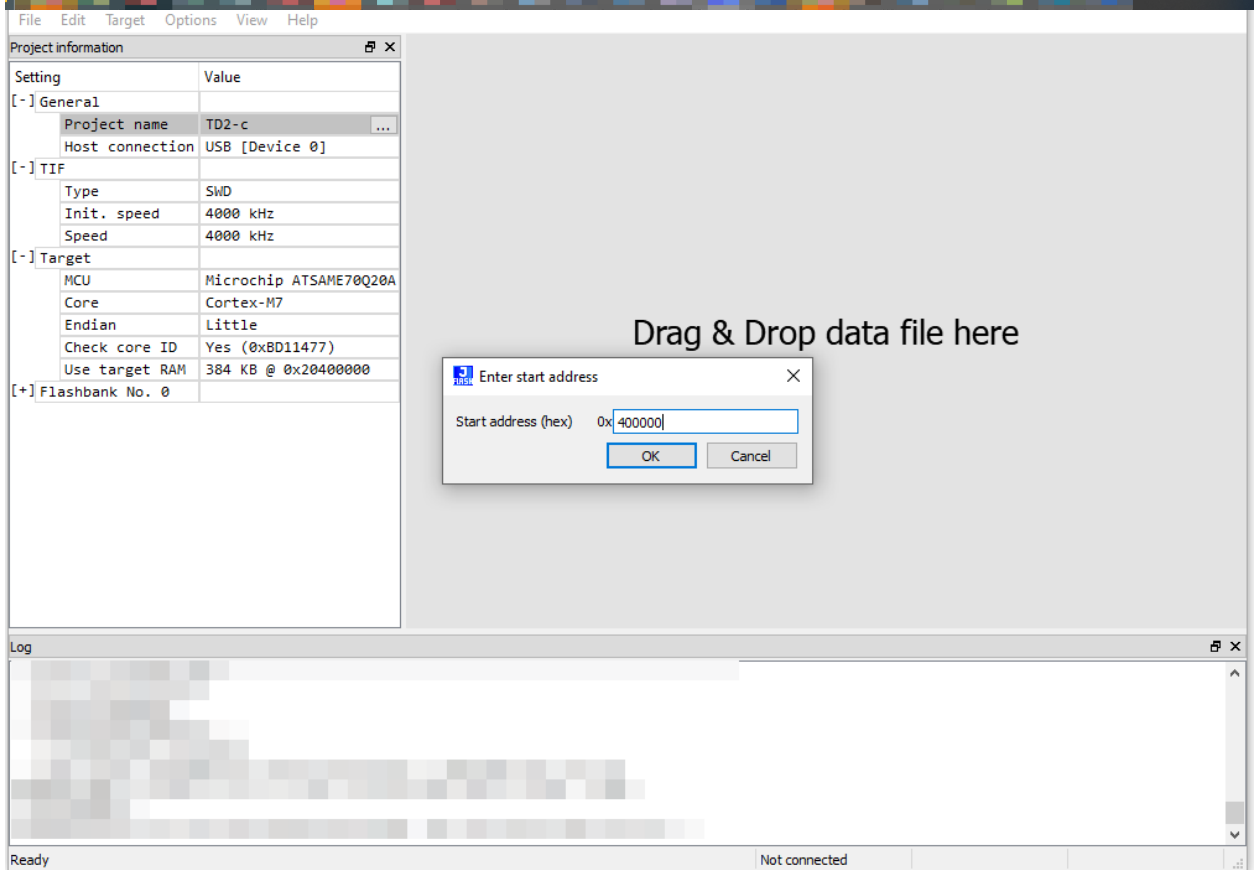
Now erase your chip: Go to Target/Manual Programming/Erase chip



From the TD2 flash folder, drag the file Boot_TD_2.bin here



Drag & Drop data file here



Drag & Drop data file here

OK Now go to : Target/Production Programming
If everything is fine, you will see this message

